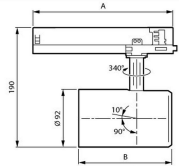


| Track   | Flux | CCT   | Optic                        | A (mm) |
|---------|------|-------|------------------------------|--------|
| PSU     | 205  | 840   | HNB/HMB/HVBR/HVBR/HOVL/HHOVL | 158    |
|         | 495  | PW930 | NB/MB/WB/VVBR/OVL/V          | 162    |
| DIA     |      |       |                              | 251    |
| DIA.VLC |      |       | All                          | 253    |
| WA      |      |       |                              | 224    |



| Flux | CCT        | B (mm) |
|------|------------|--------|
| 275  | FMT/Rose/R | 136    |
| 395  | FR/p930    | 149    |
| 495  |            |        |



## Specifications Philips LED Tracklight GreenSpace Evo Projector White 31.5W 4000lm 41x80D - 830 Warm White

[View Product](#)

### General Information

|                          |                             |
|--------------------------|-----------------------------|
| SKU                      | 251906                      |
| EAN                      | 8720169590960               |
| Brand                    | Philips                     |
| Manufacturer Name        | ST333T 39S/830 PSU WB WH481 |
| Any Lamp all-in warranty | 5 Years                     |
| Average Lifetime (h)     | 50000                       |

### Technical Information

|                             |                   |
|-----------------------------|-------------------|
| Technology                  | LED Integrated    |
| Voltage (V)                 | 220-240           |
| Dimmable                    | Not Dimmable      |
| Colour Code                 | 830 Warm White    |
| Colour temperature (Kelvin) | 3000 Warm White   |
| Colour Rendering (Ra)       | 80-89             |
| Colour of Light             | White             |
| Light colour options        | Single Color      |
| Luminous Efficacy (lm/W)    | 136               |
| Emergency Lighting          | No Emergency Unit |
| Beam Angle (degree)         | 41x80             |
| Power factor                | >0.90             |

Product Type Category

LED Trackspot

## Fixture Information

---

|                        |                   |
|------------------------|-------------------|
| Mounting Method        | Rail              |
| Operating Temperature  | 0 to +25          |
| IP-rating              | IP20              |
| Impact Protection (IK) | IK02 - 0.20 joule |
| Housing                | Plastic           |
| Colour of the Fixture  | White             |
| Colour of material     | White             |

## Dimensions

---

|             |     |
|-------------|-----|
| Length (mm) | 158 |
| Width (mm)  | 92  |
| Height (mm) | 190 |

## Sensor Information

---

|                |           |
|----------------|-----------|
| Type of sensor | No Sensor |
|----------------|-----------|

## Why Any-lamp?



Order from the **largest lighting specialist** in Europe



**Customised** quotation



Up to **7 years warranty**



**Easy** return process